

Natural Communities and Covered Species Conservation Targets

BDCP Steering Committee

February 25, 2010

PRELIMINARY DRAFT – NOT FOR DISTRIBUTION

▶ Terrestrial Strategy Background

- ▶ **Covered Species Accounts November 2008 & June 2009**
- ▶ **Sept 24, 2009 Steering Committee**
 - ▶ Draft BDCP Terrestrial and Non-tidal Community Conservation Measures
 - ▶ Draft Terrestrial and Non-Tidal Community Biological Goals & Objectives
- ▶ **Dec 17, 2009 Steering Committee**
 - ▶ Draft BDCP Natural Community Biological Goals and Objectives – including conservation approaches (redistributed today)
 - ▶ Draft Covered Wildlife and Plant Species Biological Goals and Objectives – including conservation approaches (redistributed today)

▶ Terrestrial Strategy Background (continued)

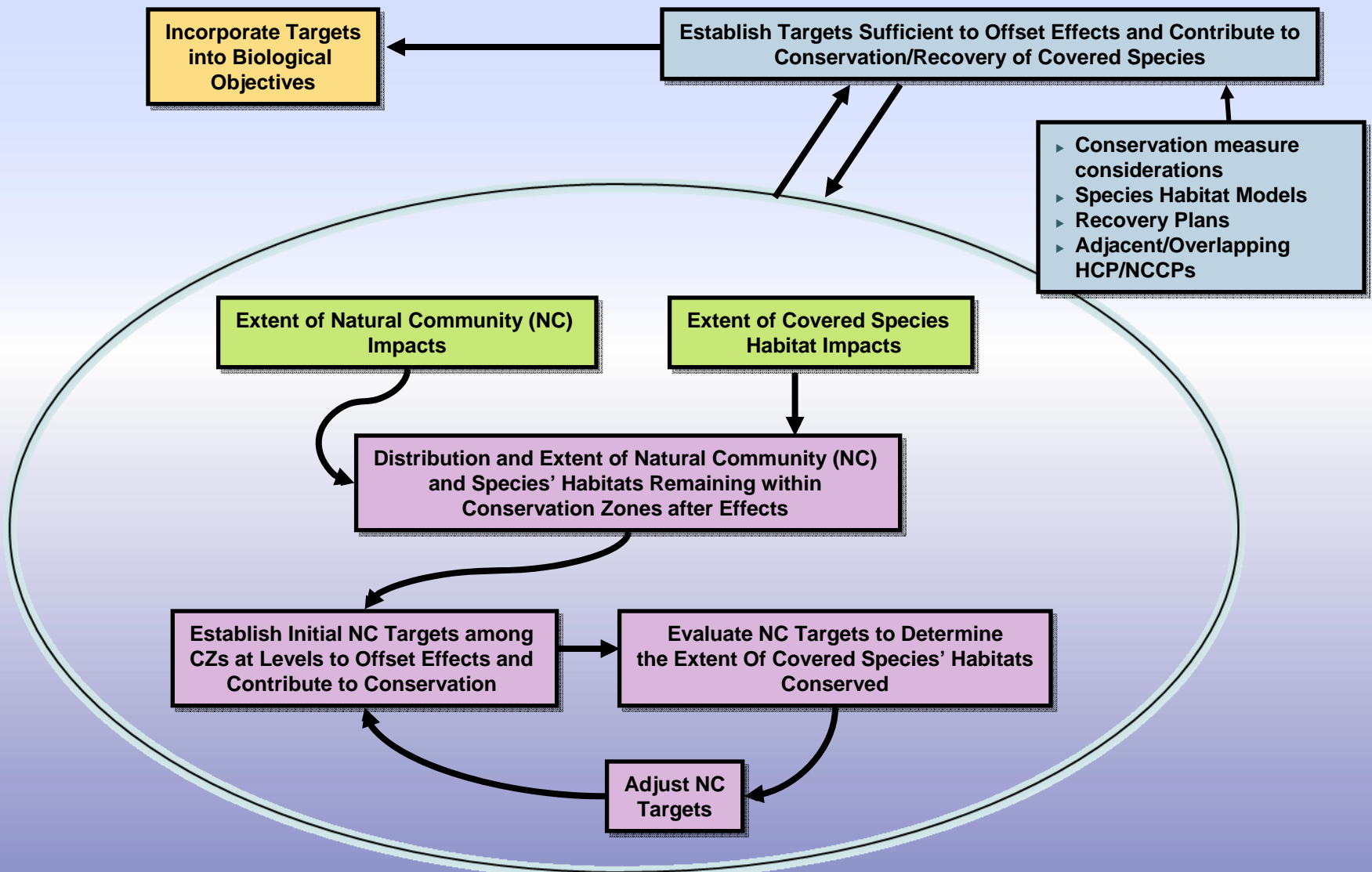
▶ **Feb 4, 2010 Steering Committee**

- ▶ Draft Conservation Land Targets (i.e., natural community targets)
- ▶ Draft Covered Species Habitat Conservation Targets
- ▶ Example Summary Descriptions of 4 Covered Species Conservation Strategies (with rationale)

▶ **Feb 11, 2010 Steering Committee**

- ▶ Draft Conservation Land Targets (version 2) (with agricultural lands & managed wetlands added)
- ▶ Summary Descriptions of Swainson's Hawk Conservation Strategy (with rationale)

► Preservation and Restoration Acreage Target Setting Process



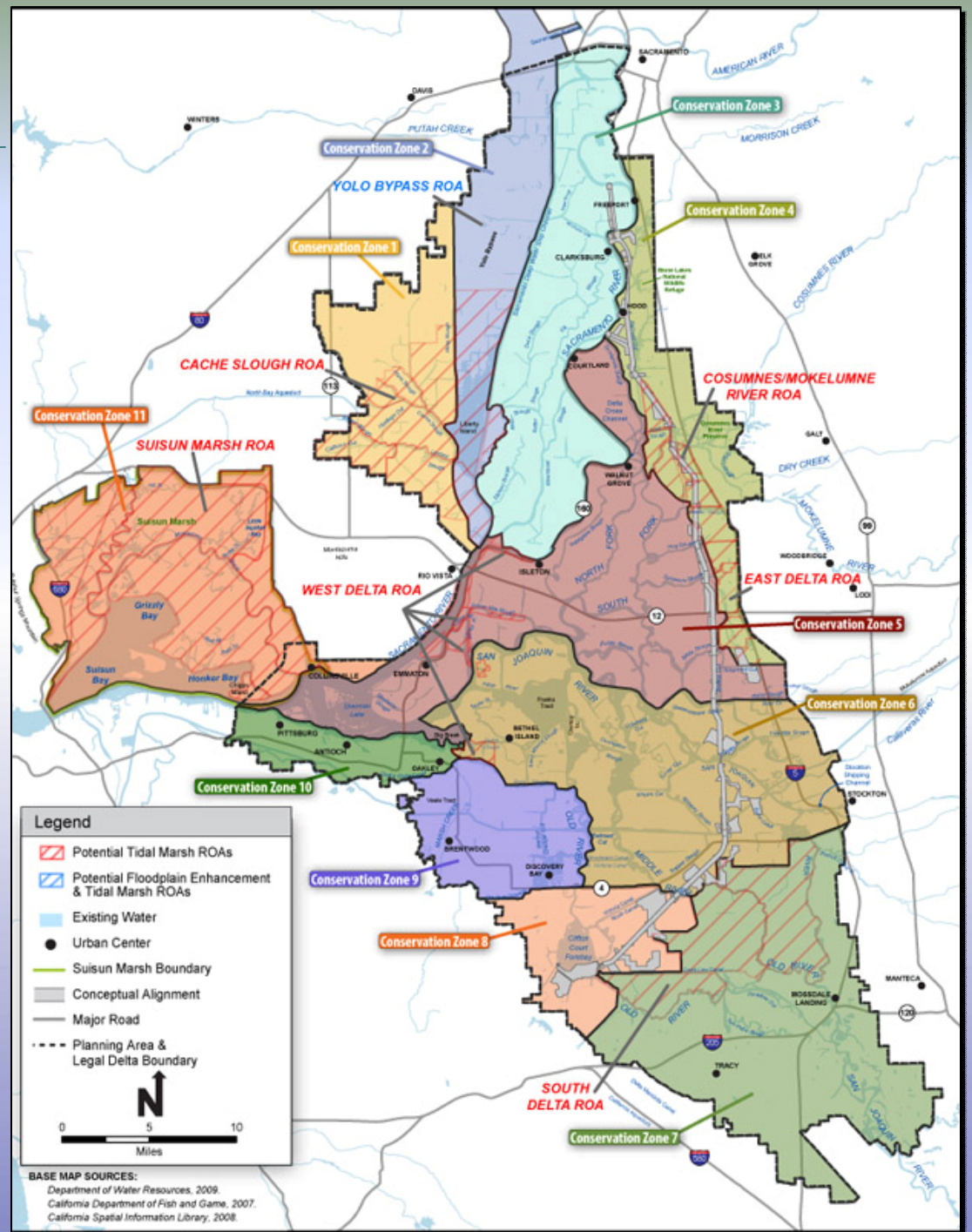
▶ Today's Draft Materials

- ▶ Summary of SAIC Proposed Covered Species Habitat Mitigation and Conservation
 - ▶ Table with acres of impacts, mitigation, and conservation and rationale
 - ▶ Impacts – estimated using Intakes, All-Tunnel conveyance, and tidal marsh restoration impacts (preliminary estimate only – full effects this spring)
 - ▶ Mitigation – acreage targets to address replacement of habitat functions lost through impacts
 - ▶ Conservation – acreage targets to provide contribution to recovery
 - ▶ Rationale – explains the approach to developing mitigation and the conservation acreage targets

Conservation Zones

[map provided with Feb 4, 2010 materials]

- ▶ Establish conservation zones based on distribution of physical and biological conditions
- ▶ Use conservation zones to distribute preserved and restored communities to meet covered species objectives
- ▶ Natural community-based approach allows for achieving multiple habitat objectives on the same land base



▶ Today's Draft Materials (continued)

- ▶ Some Considerations Regarding the Covered Species Targets
 - ▶ There will be additional impacts from BDCP facilities not included here (e.g., Fremont Weir, floodplain restoration levees)
 - ▶ There are other impacts besides the “footprint” impacts (e.g., construction disturbance of adjacent habitat, habitat fragmentation)
 - ▶ Mitigation approaches need to be verified by FWS/DFG
 - ▶ Conservation rationale need to have more context provided

▶ Today's Draft Materials (continued)

- ▶ BDCP Conservation Land Targets (Preliminary Version 2)
 - ▶ Revised from Feb 4 draft
 - ▶ All species habitat targets (mitigation & conservation) are addressed in these natural community targets
 - ▶ Rationale – explains which species and ecosystem processes most influenced the natural community target
 - ▶ Total land base preliminary estimate is 101,720-115,740 acres

▶ Next Steps

- ▶ Revise December 17, 2009, documents (goals & objectives for natural communities and covered species) to reflect information provided in the February 25, 2010 tables
- ▶ Continue to work with DFG, FWS, and species experts in reviewing draft habitat preservation and restoration acreage targets and rationale
- ▶ Prepare full write-ups of terrestrial conservation measures for Chapter 3 Conservation Strategy
- ▶ Initiate BDCP Effects Analysis for covered wildlife and plants
- ▶ Develop monitoring metrics and adaptive management strategies

Questions & Discussion