

BDCP

BAY DELTA CONSERVATION PLAN

Public Meeting

June 15, 2011

California Natural Resources Agency

- Introductions
- Meeting Purpose
- Agenda

- BDCP Effects Analysis
- Alternatives Under Consideration
- Working Groups

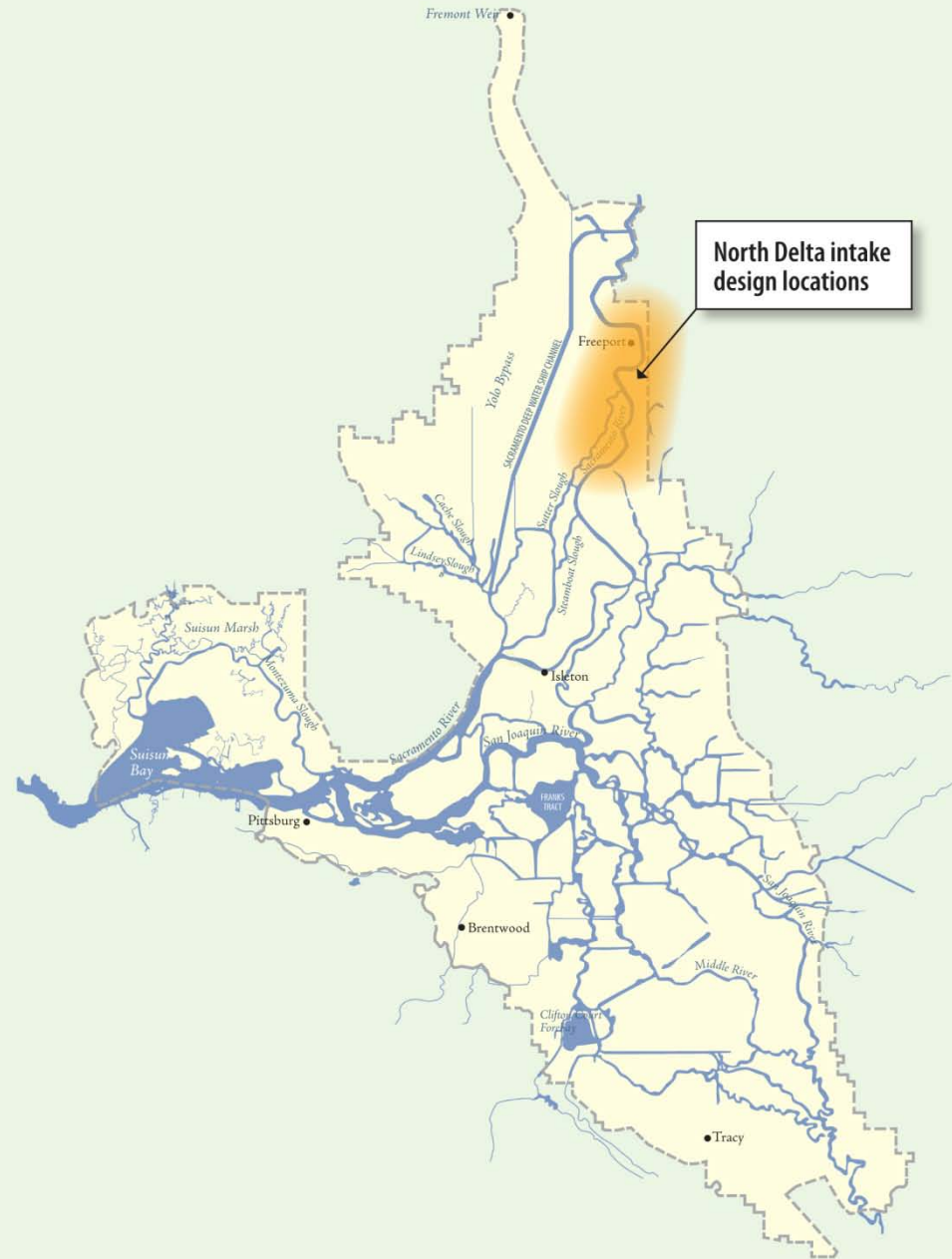
- Determines the positive and negative effects of conservation measures on biological resources
- Each species over the whole of its lifespan
- Broad range of analytical tools:
 - Hydrologic and hydrodynamic models
 - Temperature models
 - Life stage models
 - Statistical relationships of physical conditions & species
 - Conceptual models - ecological conditions and species
 - Habitat models

- Ongoing iterations of analysis will inform:
 - Description of final conservation strategy including water operations
 - Development of adaptive range of water operations and other conservation measures

- Preliminary Effects Analysis (Aug 2010)
- Key Issues:
 - North Delta intake design and configuration
 - Reduced Sacramento River flows downstream of the North Delta intakes
 - San Joaquin River migratory fish survival
 - New operable barrier at head of Old River (HORB)
 - April-May Old Middle River (OMR) flows
 - Spring Delta outflow effects on longfin smelt
 - Fall X2

Fish Facilities Technical Team Process

- Interagency team of engineers and biologists
- Reviewing the recommendation to change to “on-bank” facilities
- Revisions to 2010 Project Operations are pending FFTT recommendations on design, location and performance criteria



Reduced flows in the Sacramento River downstream of the proposed North Delta intakes

- No changes to Initial Project Operations at this time
- Results of Effects Analysis will help inform decisions and development of adaptive range and may result in changes to initial operations.



San Joaquin River migratory fish survival -

- New operable barrier at Head of Old River (HORB)
- Barrier to be operated in conjunction with OMR flow criteria
- Continue to evaluate whether the experimental non-physical barrier can be effective.
- Develop operating criteria and triggers for physical and non-physical barriers



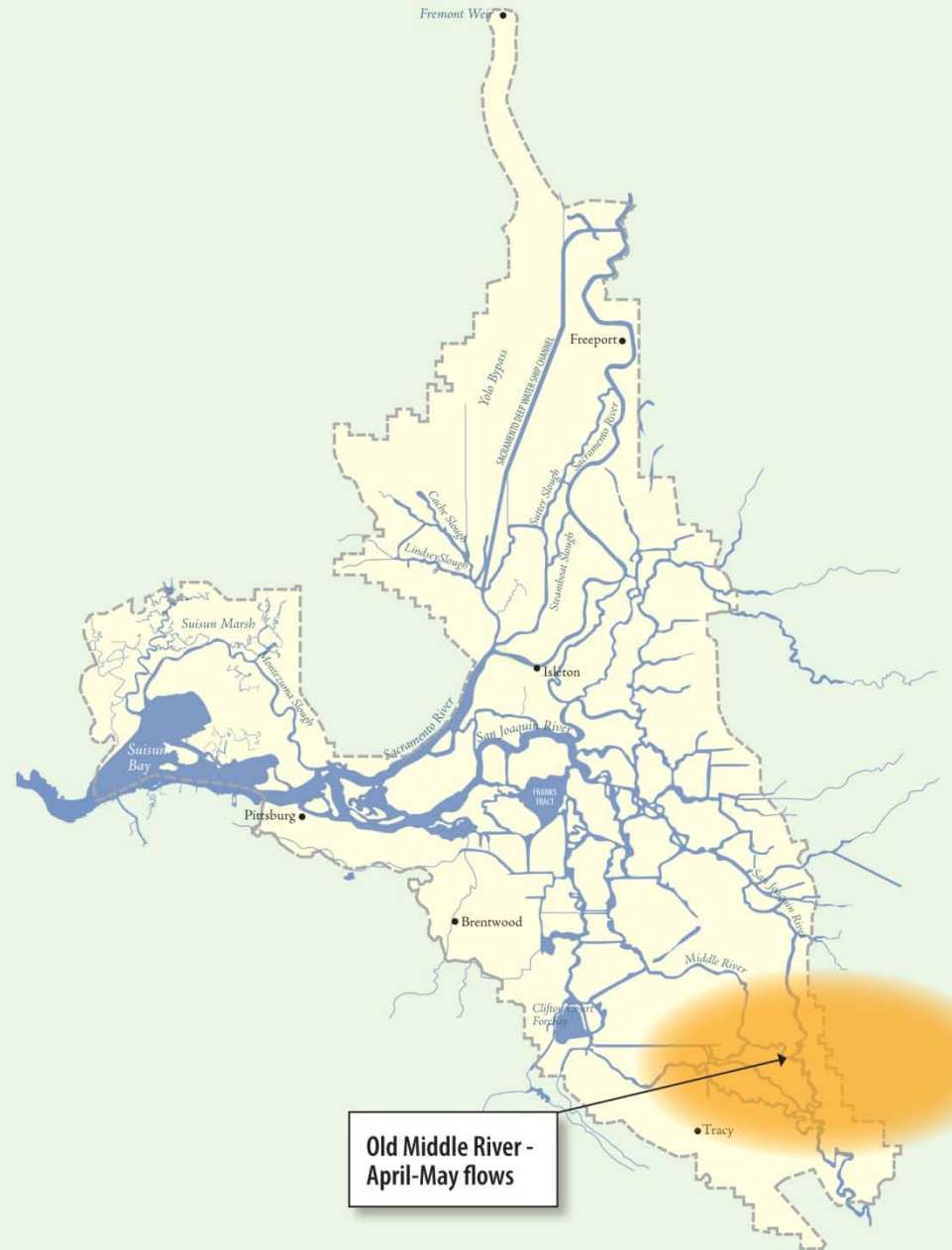
OMR Flows

In Addition to April and May, Modifications include explicit objectives at other months of the year to increase survival of:

- Steelhead
- Salmon
- Splittail
- Sturgeon

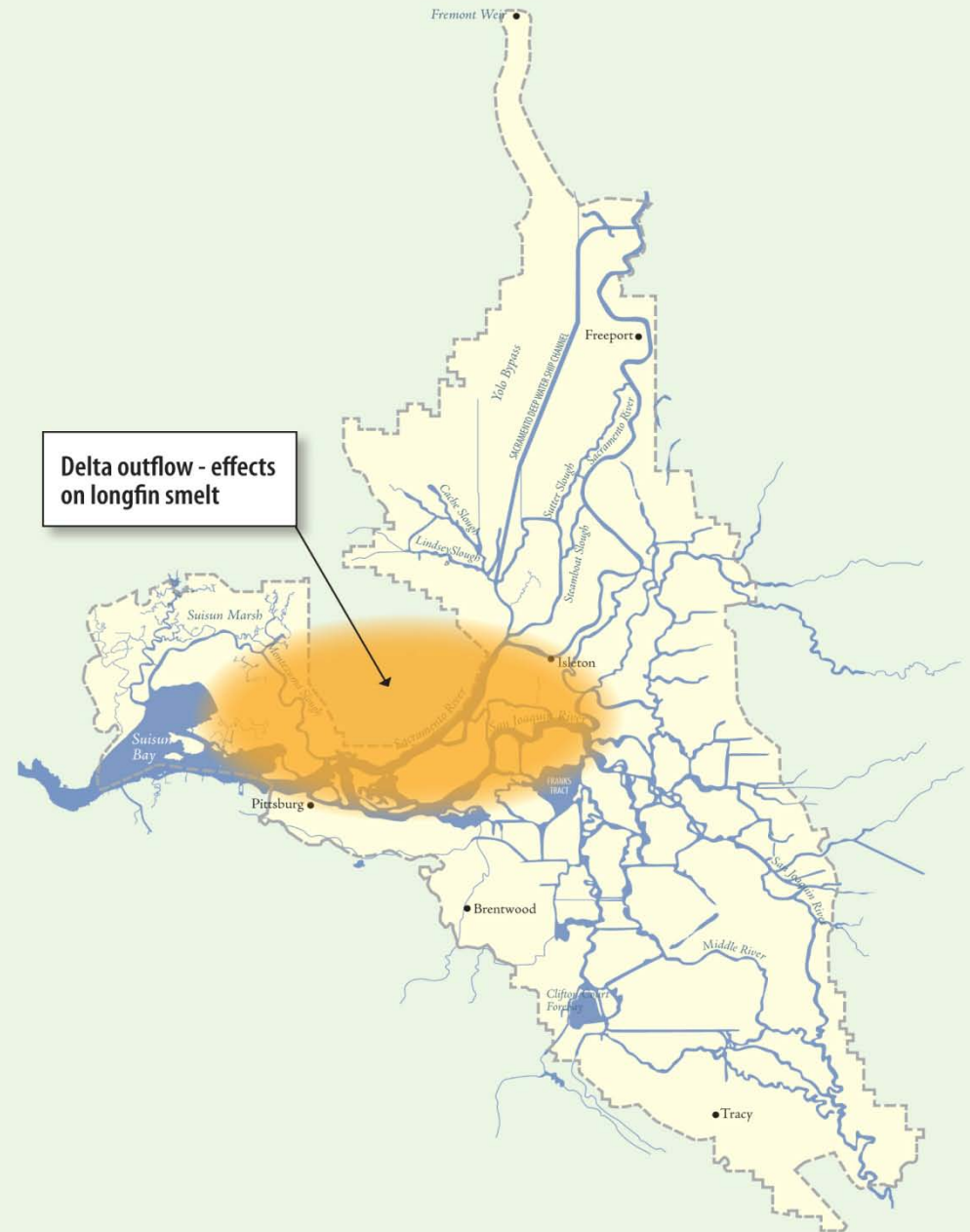
Physical Barrier to be operated in conjunction with OMR flow criteria

OMR Targets are based on Central and South Delta Conditions AND San Joaquin River Flows



Spring Delta outflow issues related to longfin smelt

- No changes to Initial Project Operations at this time
- Decisions will be informed by the Effects Analysis.
- Will identify an adaptive range for operations



Fall X2

- A range of project operations criteria, will be evaluated for the Fall X2 action.
- Effects Analysis to include:
 - Operating criteria consistent with the Fall X2 action in the RPA in the 2008 BiOp.
 - Operations that do not include the Fall X2 action.



- Effects Analysis currently being refined
 - Ongoing development of analytical framework
 - Clarify descriptions of timing and location of effects

- Aquatics Effects Analysis
 - Define expected/desired outcomes
 - Augment use of DRERIP models
 - Apply Habitat Suitability Indices
 - Present conclusions based on long-term/near-term and wet/dry years

- Aquatics Effects Analysis
 - Present changes in temperature as daily exceedences
 - Include analysis of benefits of reduced entrainment from restoration
 - Organize by consistent geographic zones for aquatic species
 - Link zones to species and life stages; stressors

- Terrestrial Effects Analysis
 - Strengthen conclusions for species that rely on areas that would be restored
 - Clarify effects of habitat restoration on tidal species (adverse and beneficial)

- Prior to selecting a proposed project
- Evaluating based on analysis of effects on biological resources
- Potential inclusion in environmental review process (EIR/EIS)
- EIR/EIS must include a reasonable range of alternatives to a proposed project
- Legislative requirements for alternatives analysis

BDCP ALTERNATIVES UNDER CONSIDERATION

BAY DELTA CONSERVATION PLAN

- No Project
- Improved thru-Delta Conveyance - Concept similar to "Delta Corridors"
- Fully Isolated Conveyance Facility
- Dual Conveyance
- Multiple water operations - including outflow increases described by the State Board
- Multiple Conveyance Capacities
- Multiple approaches to Habitat Restoration

Public Meeting
Every 4-6 Weeks

Management
Committee
Meets every
other week

WORKGROUPS

- Biological Goals and Objectives - *Complete by end of June*
- Yolo Bypass Fishery Enhancement Plan - *Complete by early August*
- Governance Structure - *Complete by end of June*
- Water Quality Modeling in the South Delta - *Complete by end of July*
- Cache Slough Habitat - *Complete by end of August*
- Levee Maintenance Mitigation - *Complete by end of July*
- BDCP Compatibility with Delta Agriculture - *Complete by end of Sept.*
- Adaptive Range of Water Operations Criteria - *Complete by end of Sept.*
- South Delta Habitat - *Complete by end of October*
- Stone Lakes National Wildlife Refuge - *Complete by end of September*
- Conveyance Facilities:
Size and Configuration Issues - *First meeting in mid-August*
- Financing - *Schedule in development- fall 2011*

- Purpose:
 - Addressing substantive issues to be resolved to complete a draft plan
 - Input provided to state and federal agencies will support development of the draft plan
 - Address a specific topic over a specified period of time needed to meet resolution

- Participation:
 - Limited to 12 participants
 - Participants represent a stakeholder group
 - Made up of broad range of interests
 - Meetings are open to the public

- Ground Rules:
 - Address one specific topic
 - Solutions-oriented
 - Utilize existing data and technical information

WORKING GROUP	JUNE	JULY	AUGUST	SEPTEMBER	OCTOBER	NOVEMBER	DECEMBER
Biological Goals & Objectives	→						
Yolo Bypass Fishery Enhancement Plan	→	→					
Governance Structure	→						
Water Quality Modeling in South Delta	→	→					
Cache Slough Habitat		→	→	→			
Levee Maintenance Mitigation		→					
BDCP Compatibility with Delta Agriculture		→	→	→	→		
Adaptive Range of Water Operations Criteria			→	→	→		
South Delta Habitat			→	→	→	→	
Stone Lakes Wildlife Refuge				→	→		
Conveyance Facilities: Size and Configuration Issue				→	→		
BDCP Relationship to San Joaquin River Restoration Program	TBD BASED ON RESOLUTION BY U.S. BUREAU OF RECLAMATION						
Financing	TBD						



The Screening Process

The lead agencies preparing the environmental review document have been working towards identifying a range of reasonable alternatives to the pending proposed BDCP project. Consistent with the 2009 Delta Reform Act, the lead agencies are looking at a range of alternatives that vary in size and operational criteria. The alternatives ultimately selected by the lead agencies will reflect the use of a multi-step screening selection process in addition to the consideration of the responsible and cooperating agencies' scoping comments.

First Screening Level

- Under NEPA, could the potential alternative concept meet the project's purpose and need as presented in the Notice of Intent?
- Under CEQA, could the potential alternative concept feasibly attain most of the basic objectives of the project, as presented in the Notice of Preparation?

Second Screening Level

- Under CEQA would the potential alternative avoid or substantially lessen any of the expected significant environmental effects of the proposed project?
- Under NEPA would the potential alternative address one or more significant issues related to the proposed action?

Third Screening Level

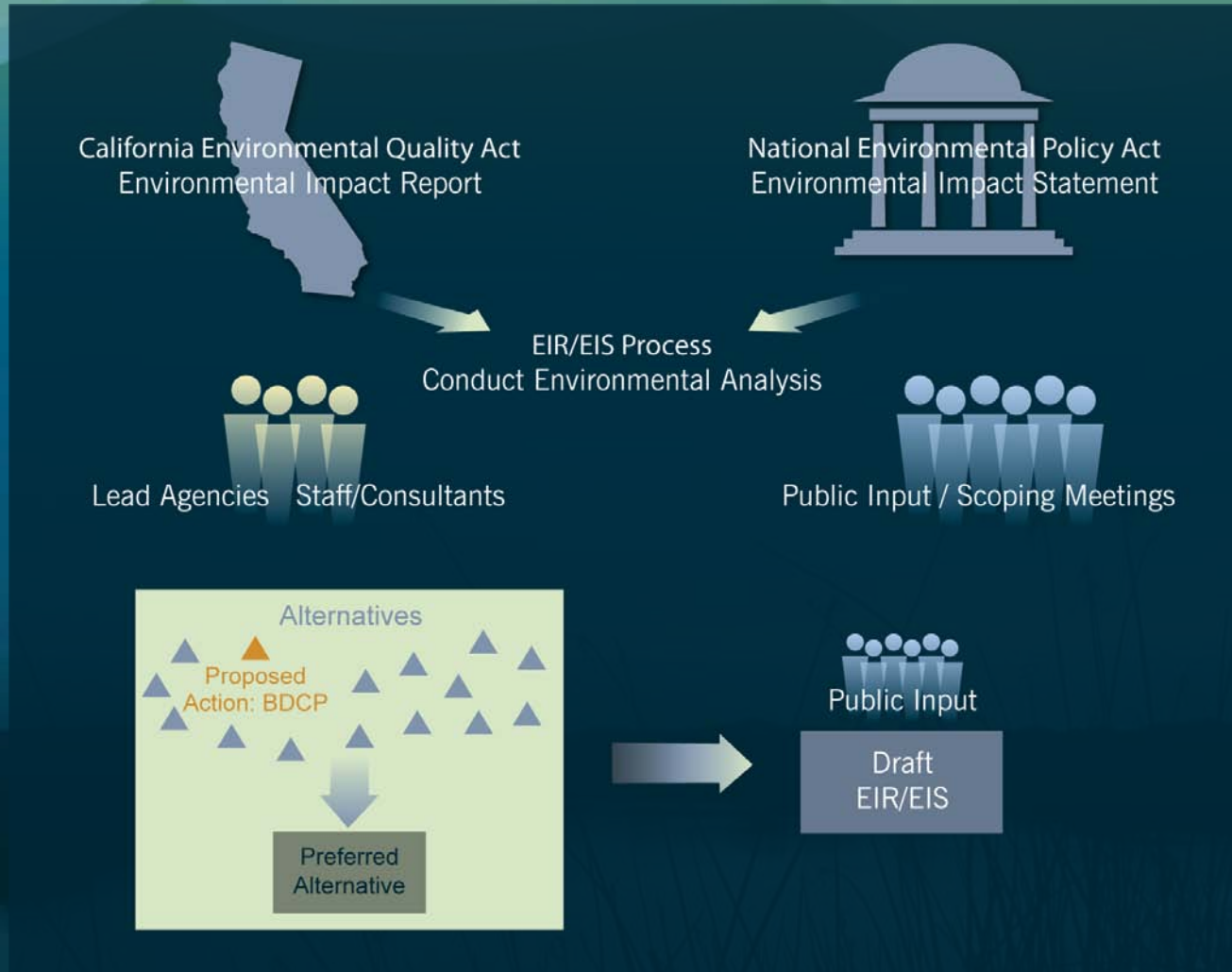
- Could the potential alternative concept be "potentially feasible" under CEQA?
- Could the potential alternative concept be "reasonable" under NEPA?

The EIR/EIS will evaluate the effects of the conservation plan on both the natural (biological) and the human environment. This evaluation will address impacts to, among others:

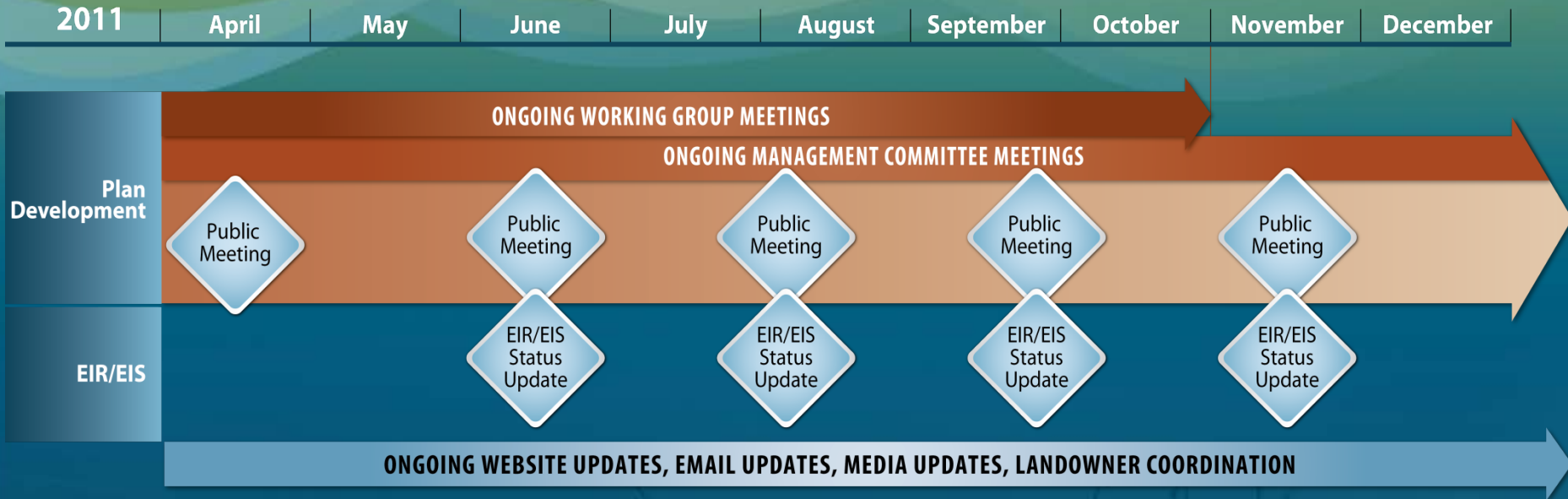
- Water Resources
- Air Quality
- Water Quality
- Climate Change
- Socioeconomic Conditions
- Land Use
- Agricultural Resources
- Cultural Resources
- Historical Resources
- Archaeological Resources
- Biological Resources
- Geology, Seismicity, Minerals, and Soils
- Transportation/Navigation
- Recreation
- Noise
- Visual Resources
- Hazardous materials
- Utilities and Public Services
- Environmental Justice

ENVIRONMENTAL REVIEW PROCESS

Proposed Action: Bay Delta Conservation Plan



UPDATED 2011 SCHEDULE



BDCP

BAY DELTA CONSERVATION PLAN

Karla Nemeth

916-651-7587

Karla.nemeth@resources.ca.gov

www.baydeltaconservationplan.com