
BDCP Adaptive Management Program

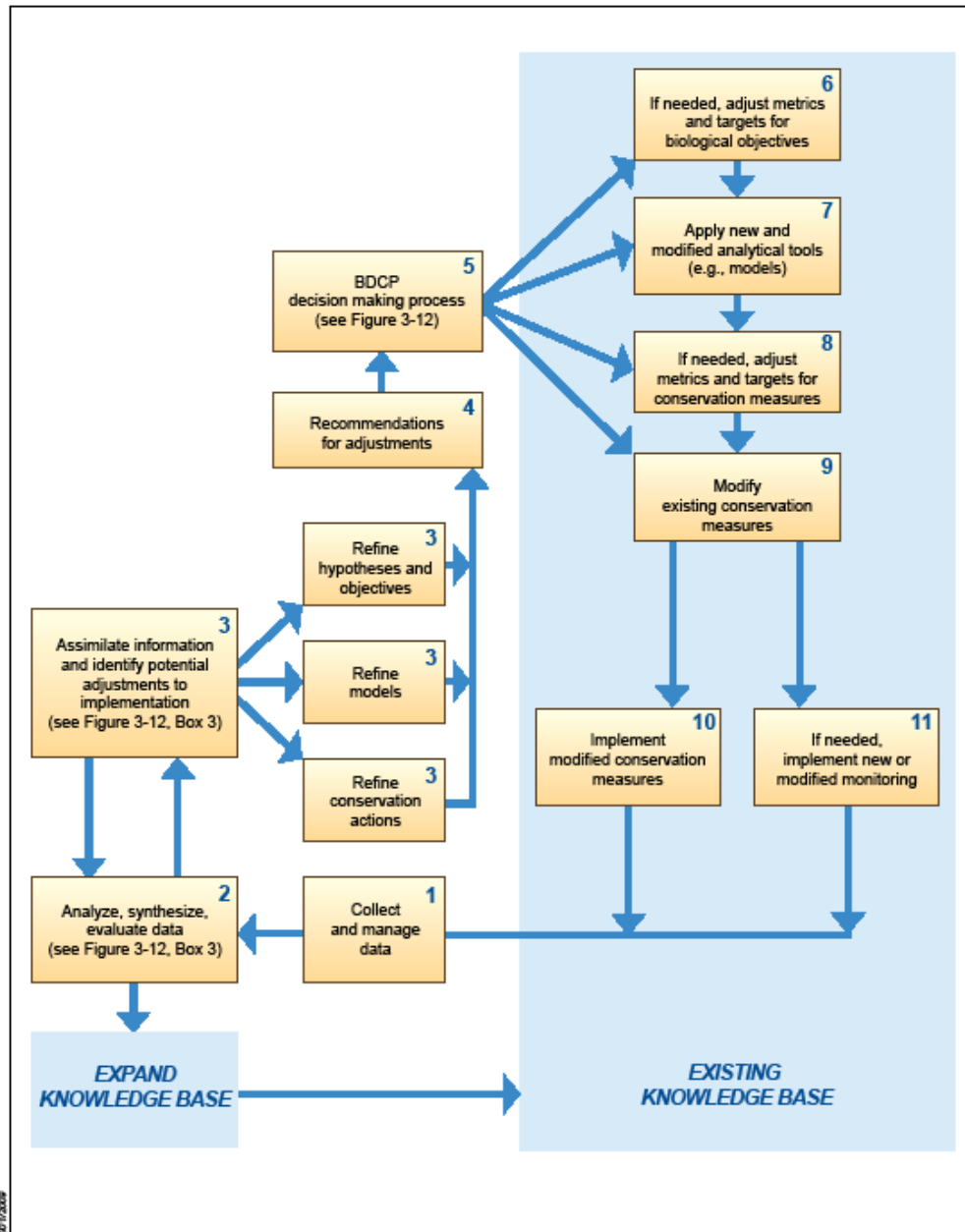
Presentation to
BDCP Steering Committee
July 30, 2009

3.6 Adaptive Management Program

- 3.6.1 Adaptive Management Process Framework
- 3.6.2 Adaptive Management Decision Making
- 3.6.3 Concept of a “Defined Adaptive Range”
- 3.6.4 Adaptive Management Triggers
- 3.6.5 Adaptive Management Experiments
- 3.6.6 Program Status Reviews

3.6.1 Adaptive Management Process Framework

- Biological Objectives and the Knowledge Base
- Implementation of Conservation Measures
- Collect and Manage Data (Monitoring & Research)
- Analyze Data and Assimilate Information
- Develop and Recommend Adjustments to Implementation
- Follow a Decision Making Process
- Implement Modified Conservation Measures, Tools, Metrics, and Targets



7/15/2009

Figure 3.11
BDCP Adaptive Management Process Framework

BDCP Adaptive Management Process

3.6.2 Adaptive Management Decision Making

- Routine and Non-routine Adaptive Management Responses
 - Relates to governance structure: Implementing Entity, Implementation Council, Fishery Agencies
- Internal Scientific Review
- External Independent Scientific Review

BDCP Decision Making Process

Routine:

- Smaller changes
- Faster
- Less process

Non-routine:

- Larger changes
- Slower
- More process

DRAFT

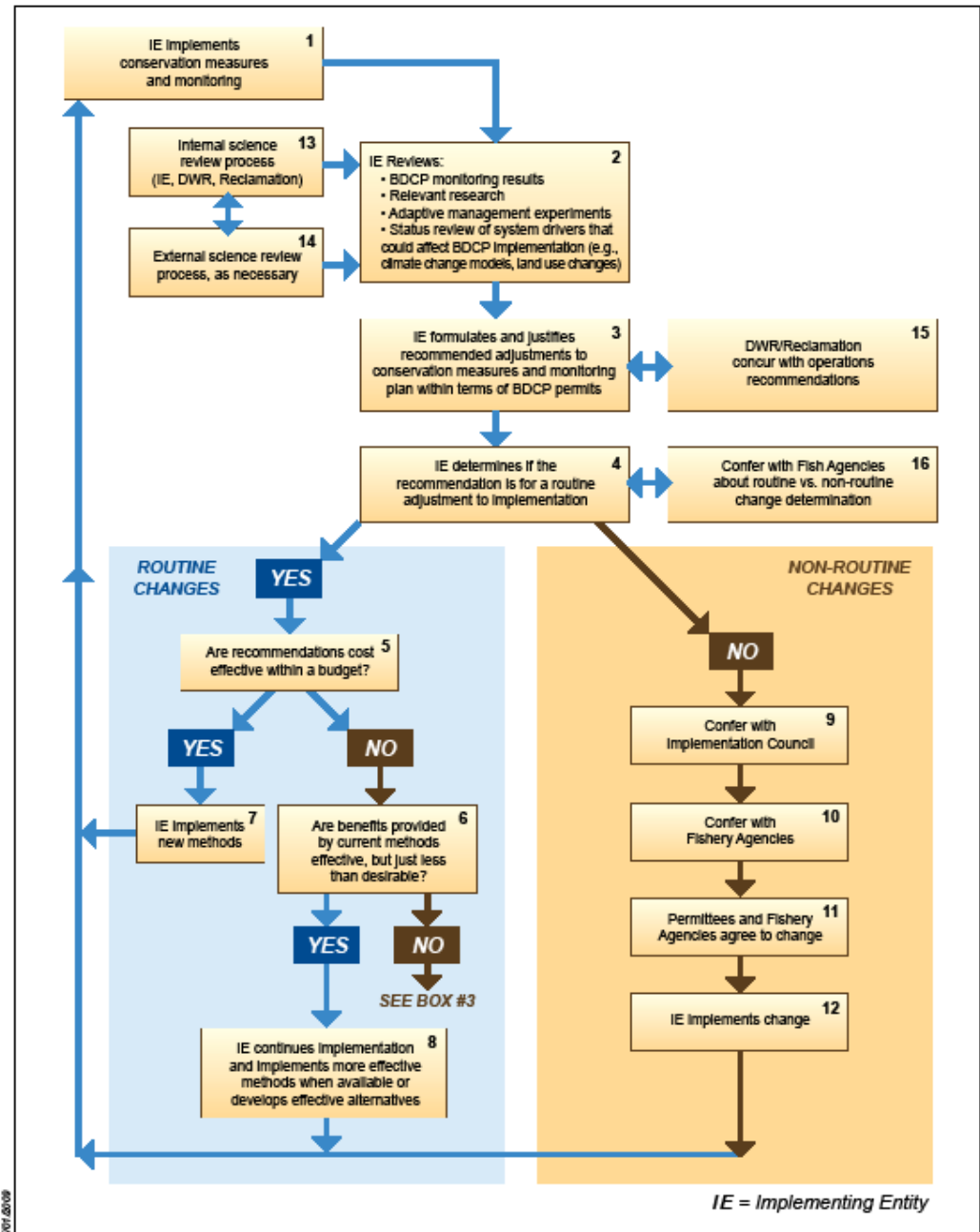


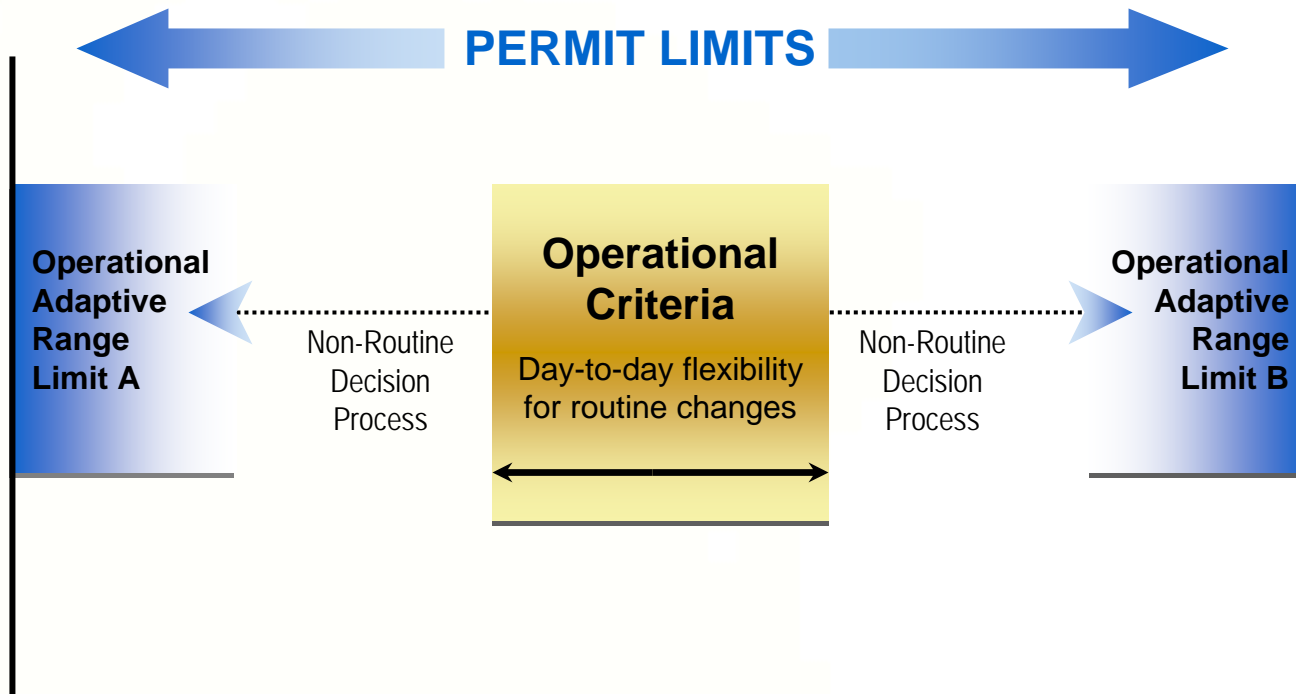
Figure 3.12
BDCP Adaptive Management Decision Making Process

3.6.3 Concept of a Defined Adaptive Range

- Water operations conservation measures, only
- Initial operating criteria
- Adaptive range limits for operating criteria
- Non-routine change to move away from initial operating criteria

BDCP Concept of Adaptive Range

Water Operations Conservation Measures



3.6.4 Adaptive Management Triggers

- Early warning that a specific target is not likely to be achieved and adaptive measures must be initiated
- Have not developed triggers yet

Additional Sections - Not Yet Developed

- 3.6.5 Adaptive Management Experiments
- 3.6.6 Program Status Reviews

Summary of Key Components

- Adaptive management process
- Decision making process
 - Routine
 - Non-routine
- Adaptive range
- Adaptive triggers